

APPENDIX

Chapter 130 – Historic Preservation

Portable Sign Guidelines – Historic Districts

Village of Osceola, Wisconsin

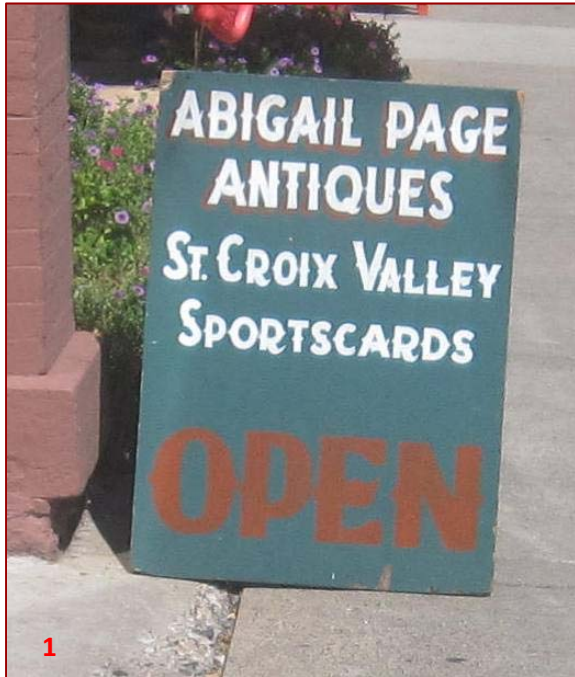
Portable Sign standards are contained in §130-4(C)(7) of the Village Code. This document provides examples of acceptable portable sign designs in the Local Downtown and National Historic Districts.



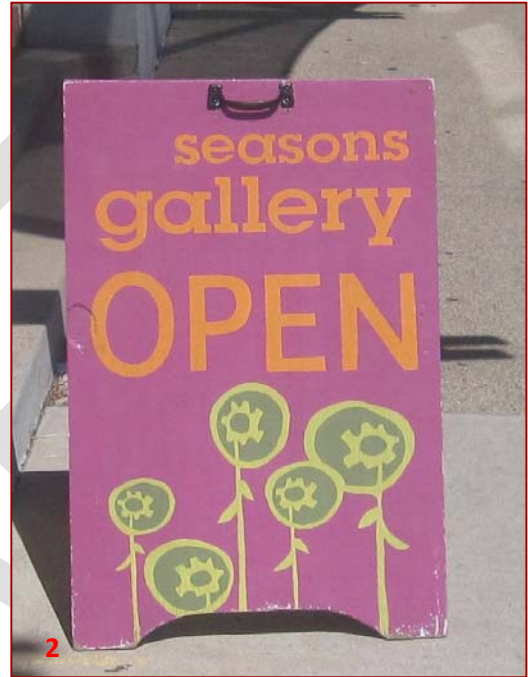
Portable signs shall be painted and constructed of quality sign-grade wood or metal with historically appropriate colors that are compatible with and complimentary to the architecture of the historic buildings and character of the Local Downtown and National Historic Districts and the business.

ACCEPTABLE

Painted signs, historic and/or business-related colors:



Painted wood sign, historic/unique font, business-related colors.



Painted wood sign, unique font, business-related colors.



Painted wood sign, business-related colors.



Wood sign, business-related colors.



Painted wood sign, business logo, business-related colors.



Painted wood sign, business logo, historic/business-related colors.
Courtesy of Wisconsin Main Street Program



Creative design, business-related.



Creative design, business logo and colors, unique font.

Handwritten or chalkboard/whiteboard signs displaying colorful, business-specific information:



Wood sign, unique design, handwritten/business-related content.



Wood sign, handwritten/business-related content, if compliant with chalkboard size requirements.



Wood sign, business logo and colors, handwritten/business-related content.

PROHIBITED

Plastic signs, non-painted/handwritten graphics:



Plastic signs, no historic/architectural value.



Graphics not painted.



Plastic sign, no historic/architectural value, attached to a permanent structure.
Courtesy of Wisconsin Main Street Program



Plastic sign, no historic/architectural value.



16

Plastic sign, no historic/architectural value.



17

Plastic sign, no historic/architectural value, not business-specific.



18

Plastic sign, no historic/architectural.

Chalkboard/whiteboard signs not meeting the size requirements:



19

Does not meet the chalkboard/whiteboard size requirements.



20

Does not meet the chalkboard/whiteboard size requirements, no historic/architectural value, not business-specific.
Courtesy of Wisconsin Main Street Program

Reflective, animated, fluorescent or illuminated signs:



21

Reflective, not business-specific.



22

Fluorescent (front) and no historic/architectural value; plastic sign, not business-specific (back).